

ALL RIGHTS RESERVED
COPYRIGHT DENVER ELECTRONICS A/S



www.denver-electronics.com

Instruction Manual

MPG-1013 PLL / MPG-2013 PLL / MPG-4013 PLL
MP3 / VIDEO PLAYER

V1.0

TABLE OF CONTENTS

INTRODUCTION	1
PRODUCT FEATURE	2
DEVICE OVERVIEW	3
SOFTWARE	4
SYSTEM REQUIREMENT	4
CONNECTION AND DOWNLOAD	4
CONNECT TO THE PC	4
DOWNLOAD FILES	5
DISCONNECT FROM THE PC	6
BASIC OPERATION	7
POWER ON/OFF	7
KEYLOCK	7
VOLUME CONTROL	7
CHARGING THE BATTERY	7

RESETTING THE PLAYER	8
LISTEN TO MUSIC	9
PLAY/STOP/PAUSE	9
DISPLAY IN MUSIC MENU	9
SUBMENU OF MUSIC	9
Play now	9
Music Library	10
PLAY A MOVIE	11
PLAY/STOP/PAUSE	11
HOW TO CONVERT VIDEO TO SMV FORMAT	11
FM RADIO	14
FM SETTINGS	14
Change mode	14
Save station	14
Auto scan	14
FM region	14
FM record	15
DISPLAY IN FM RECORD	15

RECORD FILE PLAYBACK (VOICE)	15
SUBMENU OF VOICE	15
Play now	15
Voice Library	16
PHOTO	16
MANUAL	16
SLIDE SHOW	16
THUMBNAIL	16
RECORD	16
SETTINGS	16
AUDIO	17
DISPLAY	17
TIMER	17
PLAY MODE	18
RECORD	18
SYSTEM	18
DESCRIPTION OF BUTTONS	19

PRODUCT SPECIFICATIONS	20
PRECAUTIONS AND MAINTENANCE	21
TAKING PRECAUTIONS	21
CLEANING THE DEVICE	21
FIRMWARE OF THE DEVICE	21

INTRODUCTION

Congratulations on purchasing the Flash Music Player/MP3 Player.

Before operating the unit, please read this manual thoroughly and keep it for future reference. This manual will help you use many of the exciting features to make your player view more enjoyable.

This manual contains important safe measurements and correct operational information, so please read all the information carefully before you use the device in order to avoid any unexpected accidents.

We make no representation for the errors, omissions or updates of this document. We also make no representation for the data or music files lost of the player.

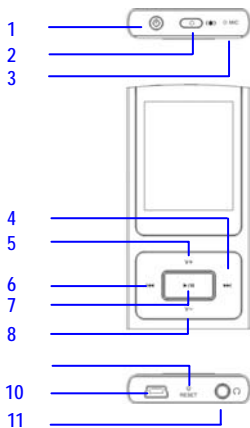
Microsoft Windows Media and Windows are trademarks of Microsoft Corporation.

Trademarks of other products mentioned in this user's manual are owned by their respective companies or organizations.

PRODUCT FEATURE

- 1.8 (128*160) inch 65K true-color TFT display
- Multi music formats as MP3, WMA and WAV
- Real audio frequency and ID3 display
- Playback of audio tracks and recorded files in Music library
- Shows clock
- Supports multi languages
- SMV video format play, other formats can be played after converted
- Supports FM Radio
- Digital voice recording with built-in microphone
- High-definition JPEG and BMP picture browse function
- Energy-saving setting, brightness adjustable, customized power off time
- Multiple EQ and customized EQ available
- Support WOW and SRS format, SRS adjustable
- USB2.0 Full speed transmission
- Portable U-disk function, support Firmware Upgrade

DEVICE OVERVIEW



1 Power/Stop button

2 SRS button

3 Microphone

4 Next/Fast-forward

5 Volume up

6 Previous/Rewind

7 Play/Pause button

8 Volume down

9 Reset hole

10 USB Port

11 Earphone jack

SOFTWARE INSTALLATION

Users of Windows ME/2000/XP do not need to install any driver, as the operating system automatically recognizes the player as a "Removable Disk".

Users of Window 98SE have to install the adequate driver (provided on the attached CD-ROM, if any) onto the PC before connecting to the PC.

System Requirement

- Microsoft ® Windows 98SE/2000/ME/XP
- Pentium 200MHz or above CPU USB port
- 120MB hard disk space or more
- CD-ROM driver

CONNECTION AND DOWNLOAD

Make sure the player is connected properly to the PC in the process of formatting or uploading and downloading to avoid program mistakes.

Connect to the PC

- Connect the player to the PC with attached USB cable. Note that, do not using USB hub or USB extended line.
- The PC system detects "New hardware" and starts to install the driver automatically, if needed, wait for the system to finish the installation.
- When it has finished, double-click "My Computer" on the desktop, a new "Removable Disk" will appear in the "My Computer" window.

Download files

Note that, this MP3 player supports 1000 music files, it will build the play list by scanning the first 1000 files which sorted by letter order. On Windows 98SE / Windows ME / Windows 2000 / Windows XP, music with DRM should be transferred by Windows Media Player version 9.0 or 10.0 (version 10.0 is for Windows XP only) to MP3 player.

Other download operation probably will cause the MP3 player can not read the music files with DRM protection.

Please note: If you format the player, remember to disconnect the player from the PC after formatting and turn it on and then turn it off before copying the music files into the player in order to rebuild the music library. After building the library and turn it off, then connect it to the PC again to copy the music files. This action is very important, it will shorten the time to building the music library.

Loading DRM protected WMA audio tracks with Windows Media® Player 10

- Start the Windows Media® Player and select the music library to manage your songs.
- In Windows Media® Player 10, select the function "Sync".
- For further advice please refer to the Windows Media® Player FAQs regarding Microsoft® Windows Media® DRM.

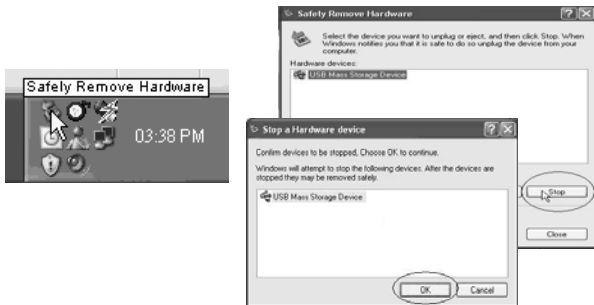
Copying audio tracks to the player from PC

- Find out your favorite MP3 or WMA music files in "My Computer".
- Use the mouse to select those music files and click those files with the Next button of the mouse to select "Copy".
- Find Removable Drive in "My Computer" and enter it, then Next click on the mouse to paste those files to the Removable Drive.

Caution: Do not disconnect the player from the PC during data transfer! It will damage the player.

Disconnect from the PC

- After complete the transmission, disconnect the player from the PC as following steps.
- Double click the icon on the system tray on the bottom Next corner of the Windows screen.
- After selecting the USB device, click the [Stop] button. When you see the [Safely Remove Hardware] window, click [OK] and then unplug the USB cable.



BASIC OPERATION

Power on/off

Power On:

Press the power on button of player, the player will display the greeting words and enter the main interface.

Power Off:

Press and hold power on button of the player for approximately 3 seconds to power off.

The system will power off automatically if the battery is exhausted.

KeyLock

Use the KeyLock function to deactivate the player controls to avoid accidental activation.

Key Locked: Set time you want in KeyLock timer option under Timer option of Setting Menu to lock the player.

Key Unlocked: Press Power button to release the player.

Volume control

In Music and Voice state, you can control the volume via Volume up [V+] or Volume down [V -] button. Hold the button to keep increasing or decreasing the volume. In Video state, you can control the volume via Volume up [V +] or Volume down[V-] button as well.

Charging the battery

This player adopts built-in polymer lithium batteries of high capacity. The battery of the player can be charged with connecting the player to computer via USB cable or USB wall adapter (option). When charging for the first time the battery should remain connected to the PC for 4 hours. Further re-charges will take about 2 to 3 hours.

Please note:

- Make sure that the battery is fully charged before first use.
- Please recharge the battery when there is a message that battery voltage is low and the player shuts down.
- Please fully charge the battery every two or three months when the player is not used for a long time. Otherwise, the battery voltage may be too low to turn the player on.



Used up



To be used



Partially used



Full Grid

Resetting the player

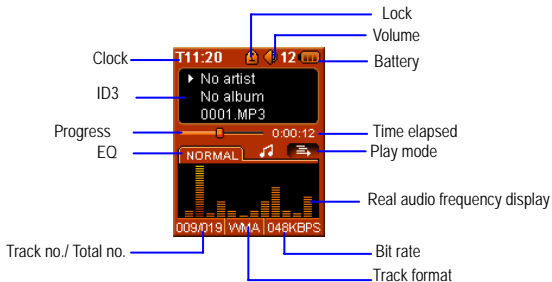
Take a metal pin, e.g. the end of a paper clip and press it into the reset hole to restart the system of your player.

LISTEN TO MUSIC

PLAY/STOP/PAUSE

In Music Play menu, connect the earphone with player, select the desired song file by pressing the Previous/Rewind [◀◀] or Next/Fast-forward [▶▶] button, press Play/Pause [▶/⏸] button to begin the playing, then press [▶/⏸] button to pause, operate it circularly. During the playing of music, the interface has real audio frequency display and ID3 information.

DISPLAY IN MUSIC MENU



SUBMENU OF MUSIC

Play now

If select Play now, player will plays all selected songs if remain in Music playback mode, else it plays all songs that saved in the player.

Music Library

Select Music in the main menu by pressing Play/Pause [▶ / II] button and press this button again to enter the sub menu of Music. Select Music library in the submenu of Music.

There are eight options in Music library menu:

Play All: Play all audio tracks in the player

Artists: List all the artists sorted from the music ID3 tags. You can select the music from any desired Artist.

Albums: List all the albums sorted from the music ID3 tags. You can select the music from any desired Album.

Tracks: List all the tracks in the player.

Favorites list: Set your favorite play list to play. Press SRS button in Artists/Albums/Tracks to add the music into the Favorites list or remove the music from the Favorites list.

Genres: Songs in the selected genre

Year: Songs in the selected year

Press Play/Pause [▶ / II] button to enter and press Volume down [V -] or Volume up [V +] button to navigate the items in the Music library. You can press SRS button to add the selected track to the Favorites list, a dialog box will eject out. Press again the SRS button to remove the selected track from the Favorites list.

PLAY A MOVIE

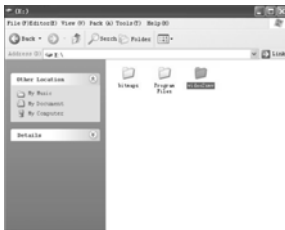
PLAY/STOP/PAUSE

Select "Video" in the main menu to play movie. Press Play/Pause [▶/⏸] button to begin the playing, press Play/Pause [▶/⏸] button to pause, operate it circularly. You can select your desired video file by pressing Previous/Rewind [⏮] or Next/Fast-forward [⏭] button whenever it is playing or stops. To stop the video playing, press and hold the Play/Pause [▶/⏸] button and system will back to the main menu.

Only video file with SMV format can be played through this player. You can convert the video with AVI, MPG, WMV, Real Player, Quick Time, DVD and MP4 format via the attached video convert software (Video2smv.exe) to SMV format.

HOW TO CONVERT VIDEO TO SMV FORMAT

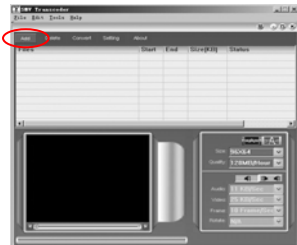
- a. Select video2smv and double click it to enter the folder as indicates in the following figure:



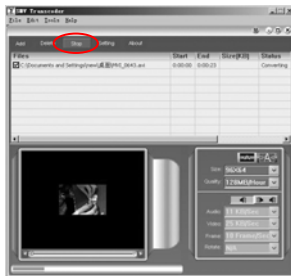
- b. Select and double click video2smv.exe program to enter as indicates in the following figure:



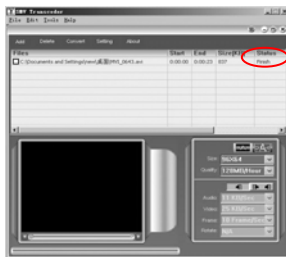
- c. Click "Add" to select the files that need to be converted. You can set the size and quality at the same time. The screen resolution of this player is 128*160 pixel, please set the size less than 160*128 pixel. The higher quality produces larger SMV file size and vice versa. The higher the quality setting value, the clearer the picture will be and vice versa.



- d. Click Convert to start the converting. Meanwhile you can click "stop" to stop transferring.



- e. When there is Finish appears in the column of Status, it means the conversion is finished. You may close the windows and transfer the converted movie with SMV format to the player.



FM Radio

After enter FM Radio mode, the system will automatically scan and save channels automatically in 87.5-108MHz in sequence (if the FM region is JPN, the frequency will be 76 -91MHz). After all 20 channels have been taken in, player will automatically switch to preset mode and play channel 01.

FM settings

Change mode

Select Change mode in the submenu of FM Radio. The saved channels can be searched by pressing Previous/Rewind [◀◀] and Next/Fast-forward [▶▶] button under "Preset" mode. Press Previous/Rewind [◀◀] and Next/Fast-forward [▶▶] button under "Scan" mode to search desired frequency and the frequency will be saved automatically under current channel.

Save station

Your desired channels can be saved under "Save station". Press Volume up [V+] or Volume down [V-] button to search the "Preset NO."(channel no.) and press Play/Pause [▶ / ||] button to save and exit or press Previous/Rewind [◀◀] button to exit.

Auto scan

Select Auto scan in the submenu, the player will search and save channels automatically in 87.5-108MHz in sequence (if the FM region is JPN, the frequency will be 76 -91MHz). After all 20 channels have been taken in, the player will automatically play channel 01.

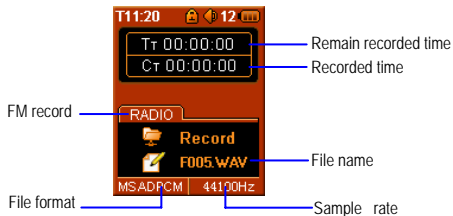
FM region

There are three options of USA, Europe and Japan.

FM record

Select FM record under FM radio settings will enter FM record state and FM recording will begin automatically without pressing any button. Press Play/Pause [▶/⏸] button to pause the recording. Press Power button to stop it and back to FM radio mode. The recorded file can be found in the Voice menu.

Display in FM record



RECORD FILE PLAYBACK (VOICE)

In Voice mode, select the desired recorded file by pressing the Previous/Rewind [◀◀] or Next/Fast-forward [▶▶] button, press Play/Pause [▶/⏸] button to begin the playing, then press [▶/⏸] key to pause.

SUBMENU OF VOICE

Play now

If select Play now, the player will plays all selected recorded files that saved in the player.

Voice Library

Press Play/Pause [▶ / ||] button in Voice mode and select Voice library in the submenu of Voice.

Microphone: tracks in the voice recorded list.

FM radio: tracks in the FM recorded list.

PHOTO

Manual

Manually select the photos by pressing Volume UP [V+] or Volume DOWN [V-] button.

Slide show

Show all photos in slide show. The speed of slide show can be set. See following chapter for the instruction.

Thumbnail

Show thumbnail of all pictures.

RECORD

Microphone record begins if Record is selected in the main menu. Press Play/Pause [▶ / ||] button to pause it or press Power button to stop the recording. The recorded file will be saved and the player will be switched to Voice mode automatically. The recorded file can be found in the Voice menu.

SETTINGS

Enter "Settings" option of the main menu. Press Volume up [V+] or Volume down [V-] button to shift between the submenu. After your selection, press Play/Pause [▶ / ||] button to confirm or press Previous/Rewind [◀◀] button to exit.

Audio

Equalizer: Equalizer selections include Normal, Classical, Jazz, Pop, Rock, SRS, Trubass, WOW, User Eq, these nine options will bring you different music effects. Press SRS button to switch between Normal and SRS/Trubass/WOW in Music/Voice mode.

SRS Set: You can edit SRS effect through “SRS Set” option. SRS settings include Brightness, SRS Definition, SRS Trubass and Volume. Press Previous/Rewind [◀◀] or Next/Fast-forward [▶▶] button to edit and press Play/Pause [▶ / ||] button to confirm.

User EQ Set: You can edit your favorite EQ effect through “User EQ Set” option. Press Previous/Rewind [◀◀] or Next/Fast-forward [▶▶] button to shift horizontally, and Volume up [V+] or Volume down [V-] button to shift vertically, then press Play/Pause [▶ / ||] button to save the selection.

Display

Backlight time: Allows you to specify the length of time before the backlight dims when there is a period of inactivity.

Slide show speed: Allows you to set the speed of slide show.

Timer

Shutdown: This set up opens options for you to select how long the device remain for when there is a period of inactivity (under stop or paused mode).

Sleep timer: This set up opens options for you to select how long the device remains for, or in other word, the device will power off automatically on the setting time.

KeyLock timer: This set up opens options for you to specify the length of time for key lock.

Play mode

Five options of Normal, Repeat one, Repeat all, Shuffle, Shuffle all.

Normal: Play the songs in sequence

Repeat one: Repeat playing a single song

Repeat all: Play all the songs in the play list repeatedly

Shuffle: Play the songs in random

Shuffle all: Play all the songs randomly and repeatedly

Record

Five options of 8KHz, 11 KHz, 16 KHz, 22 KHz and 32 KHz. The higher quality of record, the bigger file you will get.

System


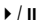




Information: System software version no., Player Flash memory and remain memory. This information is read-only, press Play/Pause [▶ / II] button to exit.

Language: Select your language.

Date/Time: Set the current date and time in this menu.

Default: In this menu, eject out the dialog box, confirm whether to resume the default value, select Yes to resume, or No to Exit.

DESCRIPTION OF BUTTONS

Button/Switch		Function
- Power		Press to power on the player. Press and hold it to power off the player. Press to release the player under locked mode.
- Play - Pause		Press to enter into its submenu. Press and hold it to go back to the main menu. Press to confirm the selection. Press to start or pause the playing or pause recording.
- Next/Fast-Forward Next track		Press to skip to the next track, mode. Press and hold to fast-forward within current track. In Radio mode press to search radio channels manually.
- Previous/Rewind Previous track		Press to skip to the previous track, mode. Press and hold to rewind within current track. In Radio mode press to search radio channels manually.
- Volume	V+ V-	Press to increase/decrease the volume level. Press the button V+/V- to skip to the next/ previous picture.
- SRS		Press to exchange SRS/Trubass/WOW and Normal option in EQ effect in Music or Voice mode. Press and hold it to record in FM or Voice mode.
- Reset Hole		Use a thin metal pin to hit the reset hole to reset the player.

PRODUCT SPECIFICATIONS

Bit rate	32-320Kbps (MP3) ; 32-192Kbps (WMA)
Rec. Sampling rate	8/11/16/22/32 KHz
Recorded format	WAV (ADPCM)
Maximum recording duration	512MB: 36 hours; 1GB: 72 hours; 2GB: 144hours; 4GB: 288 hours (8KHz, 32kbps)
SNR	>90dB
Dynamic scope	>80dB (1KHz)
Distortion	<0.05%
Output power	5mW*2
Music number limitation	1000 files
Working environment	Humidity <85%, -10~40 degree Celsius
Music format	MP3, WMA
Photo format	JPG, BMP
Frequency response	20Hz-20KHz
Dynamic current	<80mA (play mp3 music & backlight OFF)
Power off current	<500uA
Dimension	82*43*10.3mm
Weight	52g
Screen	1.8" TFT 128*160 pixels 65K colors screen
Battery	Built-in polymer Lithium rechargeable battery
Music playback duration	<8 hours (128kbps mp3, backlight off)
Video playback duration	<4 hours
USB port	USB2.0 Full Speed

PRECAUTIONS AND MAINTENANCE

TAKING PRECAUTIONS

- Before powering of the player, please plug in the earphone to avoid damaging the earphone as well as maintenance of the player. Turn off the player when stop using it.
- Do not place it near heat resource or subject to direct sunlight, dust, humid or rain.
- Do not use it in extra-dry environment to avoid electrostatics.

CLEANING THE DEVICE

- Before cleaning the device make sure it is turned off.
- To clean the LCD screen or plastic casing, wipe it with a soft, slightly dampened cloth. Never use any alcohol or diluted detergent to clean the device.
- Never spray or pour liquid directly onto the screen or plastic casing.

FIRMWARE OF THE DEVICE

- Please make sure that the player will not be disconnected in the process of formatting or uploading and downloading to avoid program mistakes.
- When it is used as mobile disc, make sure read and write files with correct method. Any mal-operation may lead to the loss of data.
- As the software provided by original equipment manufacturer has the optimum flash storage speed, all players with memory less than 128MB cannot be formatted as FAT-32 in the operating system.
- Due to different memory calculating method and the firmware is stored in the device flash memory and, it will cause the difference between flash memory marked capacity and real capacity. The real flash memory capacity is lesser than the marked memory capacity of this device is normal. With different firmware size, it

has different flash memory capacity. Please refer the table as below for more details.

Marked capacity	Real capacity	Free capacity after stored firmware
512MB	488MB~512MB	417MB~511MB
1GB	953MB~1000MB	858MB~999MB
2GB	1907MB~2000MB	1765MB~1999MB
4GB	3815MB~4000MB	3577MB~3999MB

Instructions on environment protection



Do not dispose of this product in the usual household garbage at the end of its lifecycle; hand it over at a collection point for the recycling of electrical and electronic appliances. The symbol on the product, the instructions for use or the packing will inform about the methods for disposal.

The materials are recyclable as mentioned in this marking. By recycling, material recycling or other forms of re-utilization of old appliances, you are making an important contribution to protect our environment.

Please inquire at the community administration for the authorized disposal location.